



Always inventing



The Academy of Well Intervention

Building on more than 30 years of experience

Training.
Testing.
Development.

At our renowned training facility in Stavanger, ALTUS Intervention gives future generations of offshore technicians first-hand experience in critical well intervention activities.

It has been considered common practice for oil companies to send new personnel onboard a production platform to undergo on-the-job training. Today, the number of the world's production sites is soaring, along with production costs and the certificate requirements to crews. While onboard training is increasingly considered too costly, risky and time consuming, the hands-on practical training that it provided is as important as ever.

ALTUS' Academy of Well Intervention is located at Forus; the heart of Norway's petroleum industry. The centre consists of complete testing and training facilities needed to get as close to real offshore conditions as possible. While offering practical and theoretical training in today's and tomorrow's well intervention techniques, the facilities also enable ALTUS Intervention and our clients to test the performance of well intervention equipment; in existing and in new applications.

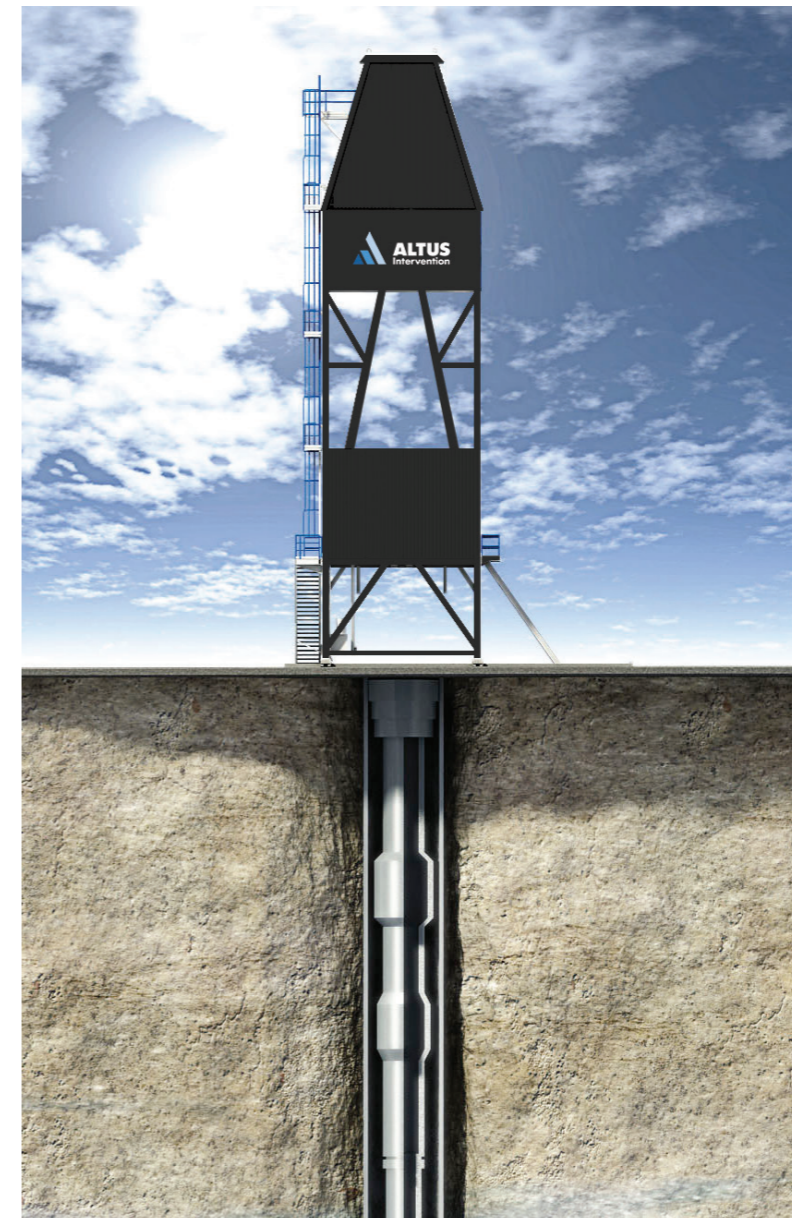
Training

Human error is recorded as the leading cause of HSE incidents. Intensive, realistic training situations provide the best opportunity to improve HSE performance and employees' judgement in critical situations. As HSE performance is top priority for ALTUS Intervention and our customers, we have made HSE training a focus area in the academy. All theoretical and practical training includes HSE procedures and best practice review as an integrated part of the course.

The Academy of Well Intervention offers courses on a range of well intervention, HSE and certificate based topics. In cooperation with our satellite centre, we offer IWCF certification for both Well Intervention and Rotary Drilling in Stavanger and Bergen. Our courses are offered not only to ALTUS Interventions' employees, but also to our customers. Our courses range from introductory courses to highly technical courses in operation and maintenance of complex tools and services.

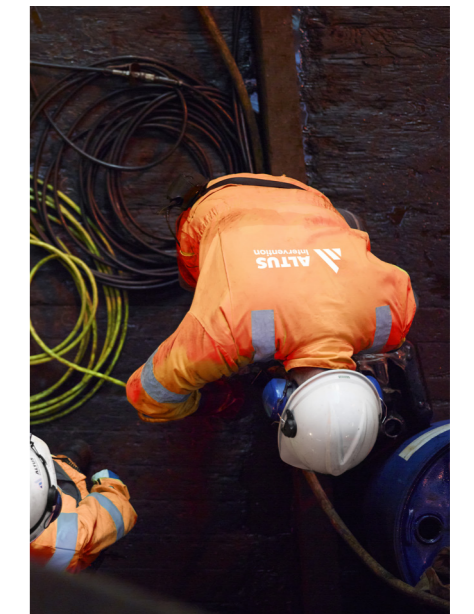
Testing

The testing facilities at the Academy of Well Intervention can test wireline tractors and wireline tractor applications, wireline surface equipment, down-hole equipment, logging equipment and riserless well intervention equipment.

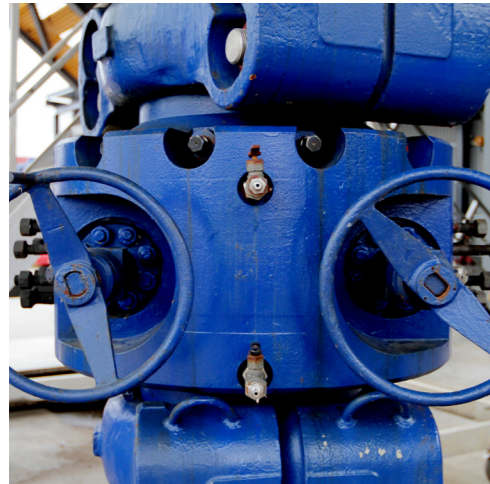


The Academy of Well Intervention

– combining practical and theoretical training in real-life surroundings



Course overview



IWCF Rotary Drilling Well Control

Duration: 5 days
Available in Stavanger and Bergen

This course includes all subjects needed to prepare candidates for the rotary drilling well control exam, surface and subsea BOP stack. IWCF exam and simulator assessment is included.

IWCF Well Intervention Combined

Duration: 4 days
Available in Stavanger, Bergen and Esbjerg

This course includes all subjects needed to prepare candidates for a combined pressure control well intervention certificate. The IWCF exam is included in the course.

IWCF Well Intervention Wireline

Duration: 3 days
Available in Stavanger, Bergen and Esbjerg

This course includes all subjects needed to prepare candidates for a wireline pressure control well intervention certificate. The IWCF exam is included in the course.

Introduction to Well Completion

Duration: 1 day
This theoretical course is intended for personnel who needs an introduction to well completion. The course is based on theory combined with hands-on demonstrations.

Introduction to Wireline

Duration: 1 day
This course is a theoretical introduction course combined with practical demonstrations to illustrate the principles of a wireline operation.



Wireline

Duration: 5 days
This course is intended for personnel working within the oil industry in general and in particular with well intervention services, e.g. well service supervisors and engineers. The course includes practical wireline training.

Light Well Intervention

Duration: 1 day
This course is a familiarization of the Light Well Intervention vessels, and operational systems onboard.

Wireline Tractor

Duration: 1 day
This course provides a theoretical introduction to the PowerTrac Advance tractor, combined with practical hands-on training in the workshop.

Basic Production Logging

Duration: 1 day
This course provides a theoretical introduction on the reasons for logging and oil well and information regarding different logging services.

Chiksan

Duration: 2 days
This course covers the basics concerning chiksan equipment and its use. Participants will get a basic knowledge in how to plan, rig up and recognize hazards regarding chiksan operations.

Customized courses

We have long experience in offering customized courses, based on the customer's needs and requests. We have arranged courses within many subjects, including the ones you see below. Please do not hesitate to contact us for more information regarding custom made courses!

- Well Intervention
- Advanced Tractor
- Coiled Tubing
- Introduction to the Oil & Gas Industry
- Wireline HP/HT
- Cased Hole Logging
- Well Control Advanced
- Wireline Fishing

General course information:

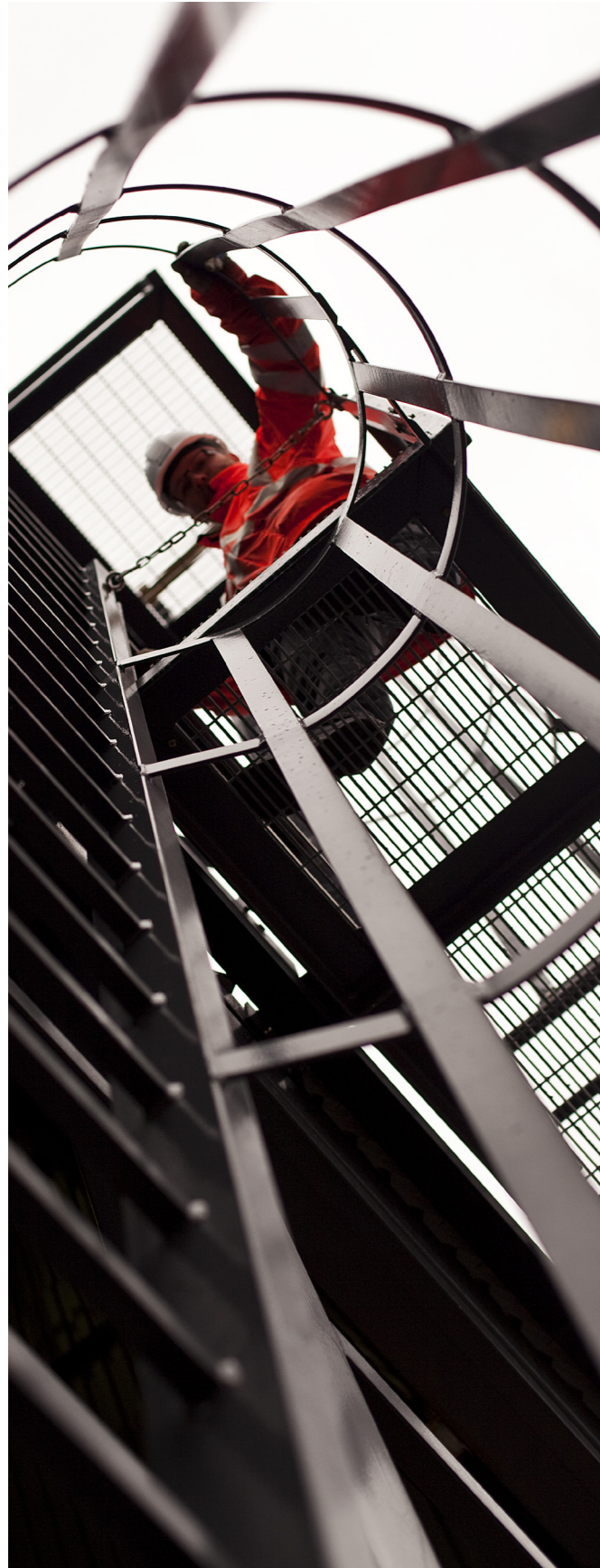
Our course material is constantly revised and improved by offshore personnel to ensure that the content is at all times up to date. The theoretical training in combination with demonstration of authentic equipment and practical training makes our courses unique.

We provide lunch and necessary personal protective equipment for all course participants.

More detailed information about each course is to be found in our online bookingportal: <https://www.kursguiden.no/coursemodule/?id=73>

Contact information:
wia@altusintervention.com

Test facility specifications



The Academy of Well Intervention is not only built for training of personnel. We also offer test facilities for the well intervention industry.

Main contents:

- Rig
- 390 meter well – completed with 9 5/8" casing and 7" and 5,5" tubing
- 40 meter well – 15" ID
- 50 meter horizontal test loop
- Workshop
- 2 electrical driven wireline winches
- WEB cameras for monitoring operations/tests

Possibilities

Tests that can be performed:

- Production logging
- Tractor and tractor applications
- Wireline tools
- Packer setting and pressure testing
- Plug setting and pressure testing
- Wireline surface equipment
- Coiled tubing equipment
- Work over units
- Completion equipment
- Manual rig tongs
- Pumping equipment
- Flow measurement
- HP/HT equipment

For preparation and executing of testing we use highly qualified offshore personnel. This secures updated knowledge and relevant experience. We strive to adapt to your needs and can customize special equipment if needed. Let us know if you have any questions regarding the test possibilities at the Academy of Well Intervention.

Mail to:

wia@altusintervention.com

The Rig

Main contents:

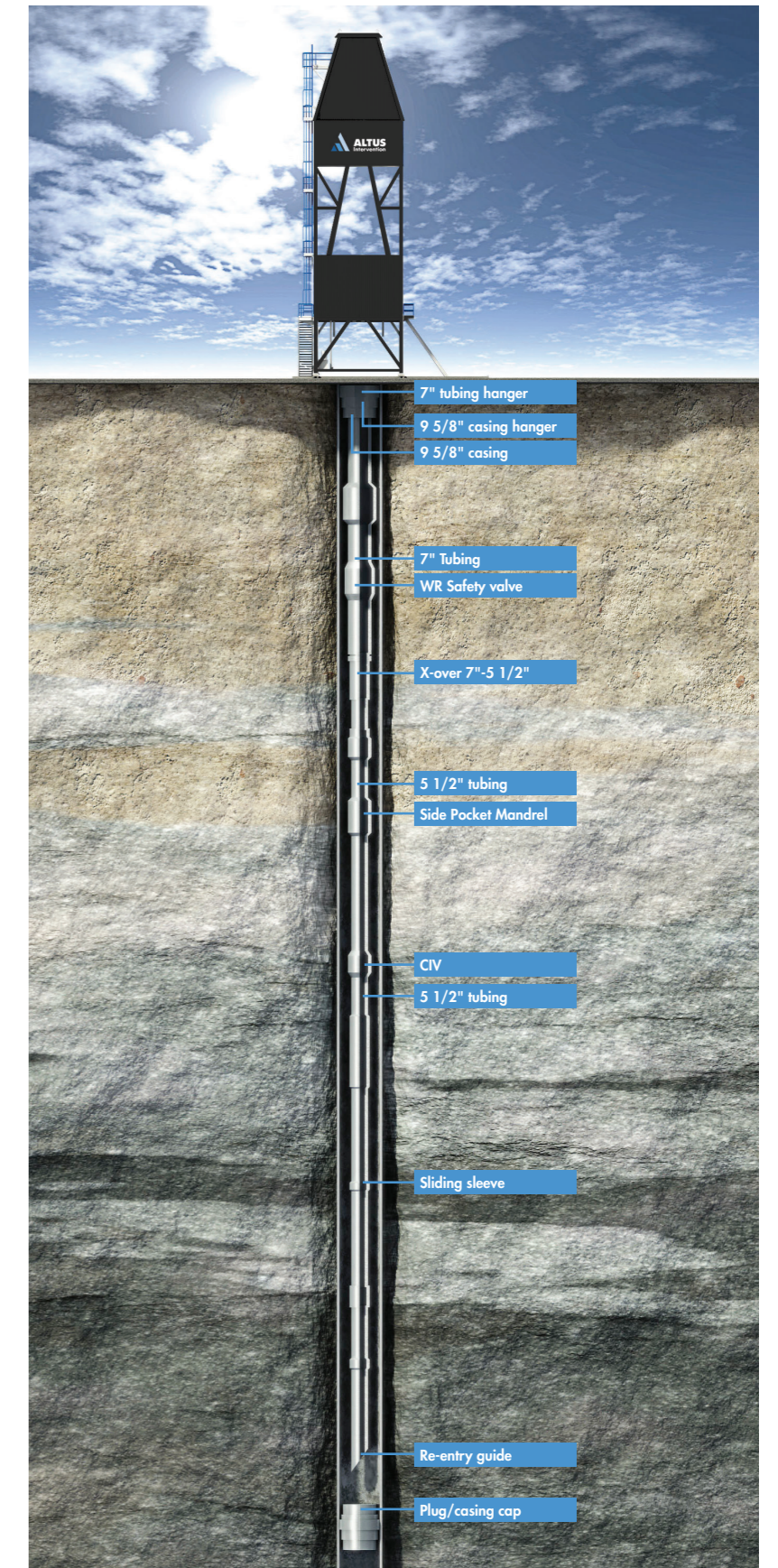
- Well intervention rig: tower 28 m high
- Rigfloor, 5 m above ground level
- Well Intervention control cabin adherent to rigfloor
- Lift-operations on rigfloor: 2 tuggers, 1 main lifting mechanism (30 tons), 1 man-rider
- Rig is skidable
- Possibility for snubbing operations, coiled tubing operations as well as wireline mast operations

Wells

- 3 slots, 2 wells (40 m and 390 m), possibility for horizontal well, possibility for longer wells
- 1 well completed as a real offshore well
- Circulation in well possible
- Well can be pressurized up to 345 bar (5000 PSI)
- Possible to recomplete well

Equipment

- 2 direct-electric winches
- 2 SmartChairs; operate wireline winch and tractor in same chair
- Remote operation of wireline winch, tractor and logging
- Tractor test loop, 50 m long
- Test-bench for applications



ALTUS Intervention

The Academy of Well Intervention

Christian August Thorings veg 11,
Forus, Stavanger
www.altusintervention.com
wia@altusintervention.com

© 2017 ALTUS Intervention
All rights reserved
www.altusintervention.com